

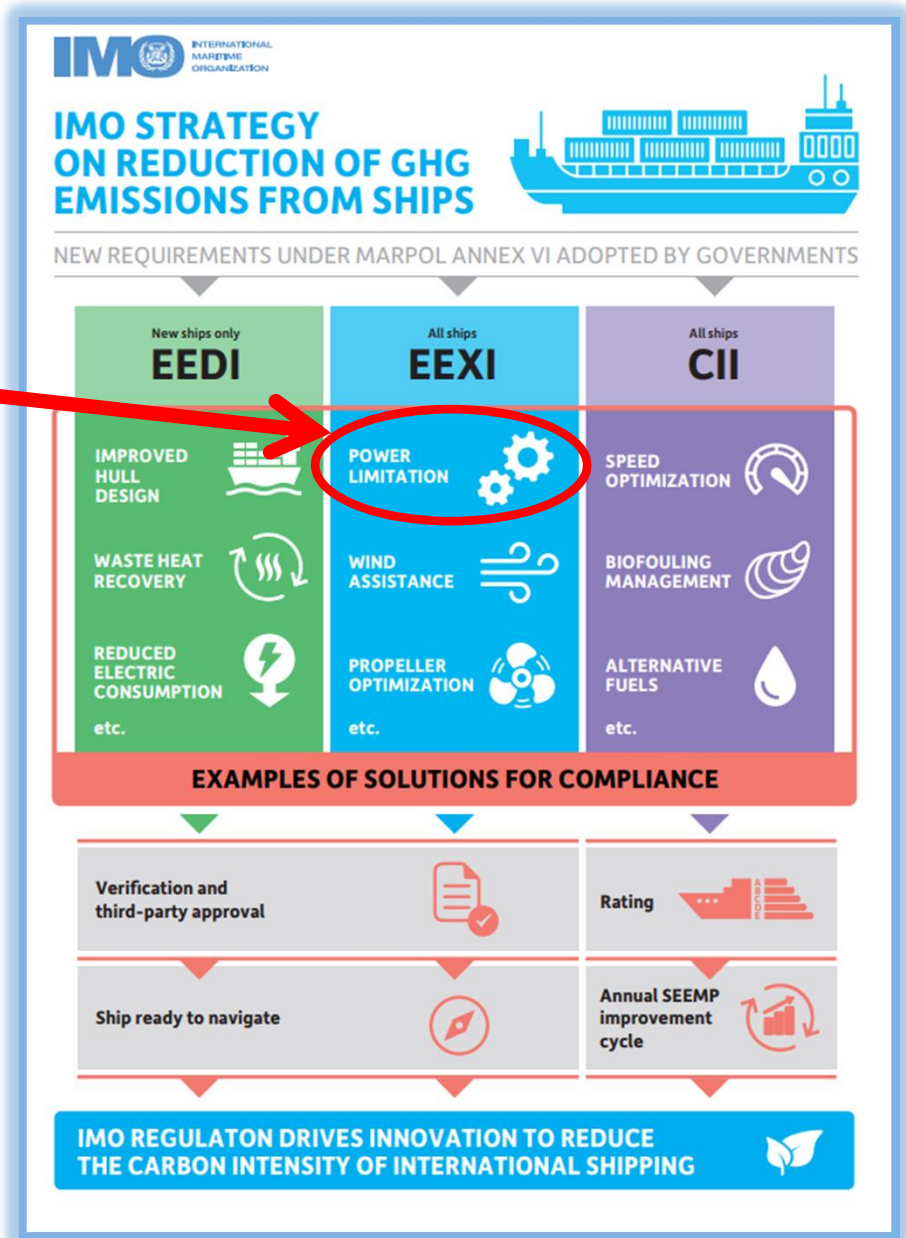


SEAWAY CUSTOMER ADVISORY GROUP

Overridable Power Limitation Systems in the Seaway

Objective

Discuss overridable power limitation systems and Seaway transit requirements.





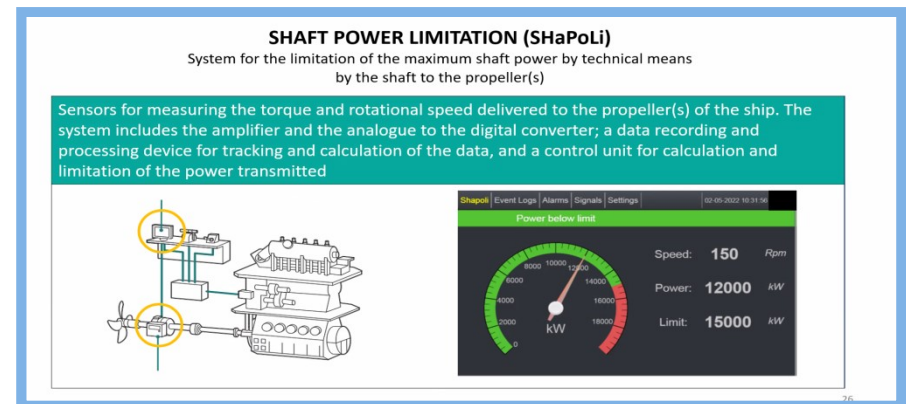
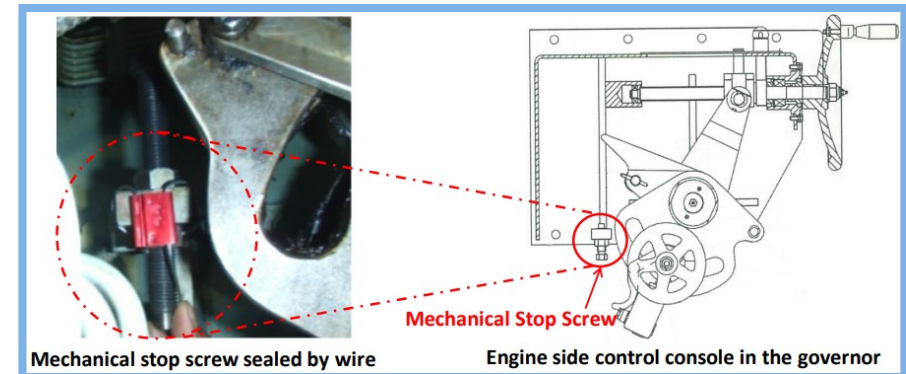
Agenda

- Background
 - Power Limitation Systems
 - Seaway Handbook Requirements
- Proposed New Seaway Transit Requirements
- Discussion

Background

To meet EEXI requirements many ships have applied an overridable power limitation system

- EPL: Engine Power Limitation (electrical / mechanical)
- ShaPoLi: Shaft Power Limitation



Background

With an EPL or ShaPoLi in use, Seaway Handbook Practices & Procedures (35) is not met:

Navigation Underway

35. Every ship transiting between calling-in point 2 and Tibbetts Point and between calling-in points 15 and 16 shall

(a) man the propulsion machinery of the ship, including the main engine control station;

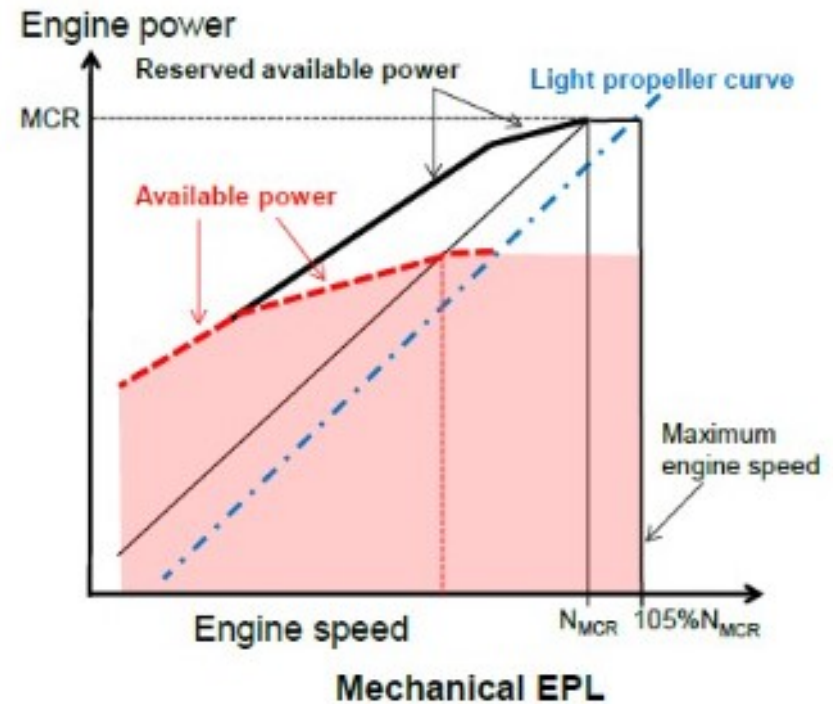
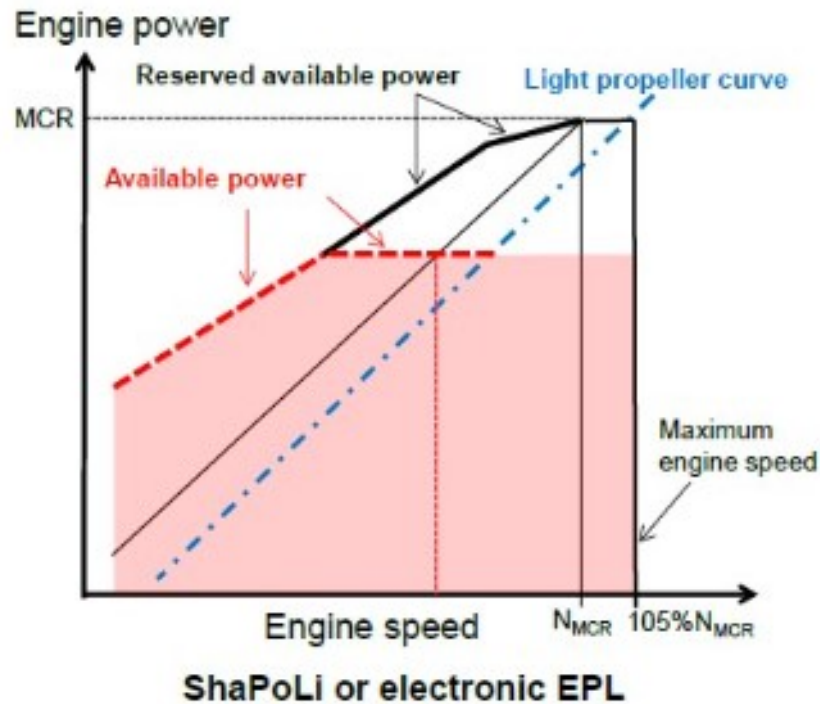
(b) operate the propulsion machinery so that it can respond immediately through its full operating range;

(c) man the wheelhouse of the ship at all times by either the master or certified deck officer, and a helmsman, and;

(d) have sufficient well rested crewmembers available for mooring operations and other essential duties.

EPL and ShaPoLi

Engine load diagram on Shaft/Engine Power Limitation



Proposed New Seaway Transit Requirements

- Override the power limitation system for transit in the Seaway
 - In MLO, between CIP2 and Tibbetts Point
 - In the Welland Canal, between CIP 15 and CIP 16
- During inspection, demonstrate the power limitation system is overridden as described in the Onboard Management Manual
- Provide documentation to prove the power limitation system was overridden
 - Bridge and engine-room logbooks if power reserve not subsequently used
 - Record page of the OMM if the power reserve is used, signed by the Master



Discussion

- Challenges in overriding power limitation systems
- Ability to provide proof of disabling power limitation system, i.e. during inspection, documentation
- Are there other strategies in place, ex. alternative fuels, that will also limit full operating range of a ship?
- Requirement to report such systems to the Seaway